



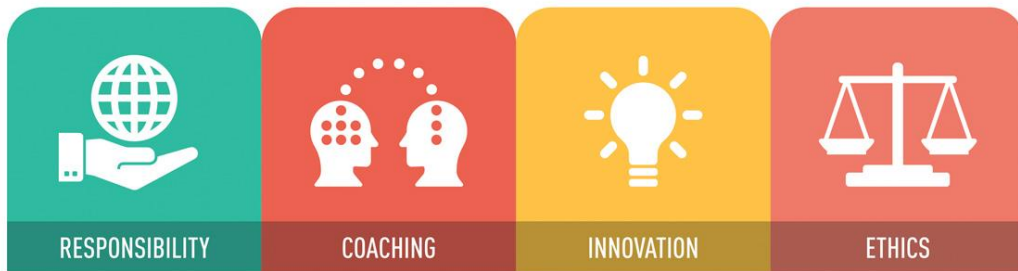
ESTD: 1999

ADARSH SHIKSHAN PRASARAK MANDAL'S

K. T. PATIL COLLEGE OF PHARMACY

DHARASHIV – 413501 (M.S.)

- NAAC Accredited 'B' Grade
- ISO 9001:2015 Certified Institute
- PhD Research Centre



CODE OF CONDUCT



CODE OF CONDUCT

FOR STUDENTS

Expected standards of behavior for students of B. Pharmacy, Pharm D, and Master of Pharmacy in the college and campus premises are essential for fostering a positive learning and working environment, ensuring professionalism, and upholding the reputation of the institution.

❖ Professionalism

All the students are expected to demonstrate professionalism in their interactions with others, both within the institution and in external settings. This includes respecting others, displaying integrity, and upholding ethical standards.

❖ Attendance and punctuality

Attendance at all scheduled classes, laboratories, seminars, and other academic, co-curricular, and extracurricular activities is mandatory unless otherwise exempted by the authorized college personnel. A minimum of 80% attendance is compulsory for all the theories and practicals to appear for the university examinations. In the event of medical issues, family functions/emergencies, or official works permission must be obtained from respective class teachers or guardian teachers.

❖ Respect and Inclusivity:

- ❖ Everyone in the college should treat others with respect, regardless of differences in background, beliefs, or perspectives. Discriminatory behaviour, harassment, or bullying of any kind is strictly prohibited.

❖ Professional Communication:

Clear, respectful, and professional communication is expected in all interactions within the college community. This includes communication between students, between faculty and students, staff members, and with external stakeholders.

❖ Professional Appearance and Conduct:

Students, faculty, and staff should maintain a professional appearance and conduct themselves appropriately in all college-related activities, including classrooms, laboratories, clinical settings, and events.

❖ **Professional Attire:**

All the students are required to wear the defined college uniform during all academic activities, including classes, laboratories, and seminars. The students also wear the college identity card during college hours.

❖ **Academic Integrity:**

Students are expected to uphold academic integrity by avoiding plagiarism, cheating, and other forms of academic dishonesty. This includes properly citing sources, submitting original work, and adhering to the college's policies on academic honesty.

❖ **Collaboration and Teamwork:**

Collaboration and teamwork are encouraged among students to foster a supportive and collaborative learning and working environment. This includes sharing knowledge, skills, and resources for the benefit of all.

❖ **Confidentiality:**

All the students are expected to respect the confidentiality of sensitive information, including personal information about students, faculty, staff, and patients. This includes adhering to privacy laws and institutional policies on data protection.

❖ **Safety and Compliance:**

Everyone in the college is responsible for maintaining a safe and compliant environment by following safety protocols, adhering to relevant regulations and policies, and reporting any safety concerns or violations.


❖ **Accountability and Responsibility:**

Individuals are accountable for their actions and behavior within the college community. They are expected to take responsibility for their academic performance, professional conduct, and contributions to the college's mission and goals.

❖ **Continuous Learning and Improvement:**

Students are encouraged to engage in continuous learning and professional development to stay updated with the latest advancements in the field of pharmacy and to enhance their knowledge and skills.




PRINCIPAL
PRINCIPAL
K.T.Patil College of Pharmacy
Osmanabad-413501

FOR FACULTY MEMBERS

Specific "code of conduct" document for faculty members, there are general ethical guidelines and professional standards that faculty members in pharmacy colleges are expected to adhere to.

❖ Professional Integrity:

Faculty members are expected to demonstrate honesty, integrity, and transparency in all their professional activities, including teaching, research, and interactions with students, colleagues, and the community.

❖ Academic Integrity:

Faculty members are expected to uphold academic integrity by avoiding plagiarism, falsification of data, cheating, and other forms of academic dishonesty. They must adhere to ethical standards in the conduct and reporting of research, and ensure proper attribution of sources in teaching materials and scholarly work.

❖ Respect for Diversity:

Faculty members should respect the diversity of perspectives, backgrounds, and experiences among students, colleagues, and members of the community. They should create an inclusive learning environment that values and respects the contributions of all individuals, regardless of race, ethnicity, gender, religion, or other characteristics.

❖ Professionalism:

Faculty members should conduct themselves in a professional manner at all times, maintaining appropriate boundaries in their interactions with students, colleagues, and other stakeholders. They should fulfill their duties and responsibilities with diligence, competence, and accountability.

❖ Confidentiality:

Faculty members must respect the confidentiality of student records, research data, and other sensitive information entrusted to them in the course of their professional duties. They should ensure the privacy and confidentiality of individuals' personal and academic information by applicable laws and institutional policies.


❖ **Compliance with Regulations:**

Faculty members should comply with all relevant laws, regulations, and institutional policies governing their professional conduct, including Dr. BAMU/PCI regulations, accreditation standards, and codes of ethics for the pharmacy profession.

❖ **Continuous Professional Development**

Faculty members are encouraged to engage in continuous professional development activities to enhance their teaching and research skills, stay updated with developments in the field of pharmacy, and contribute to the advancement of knowledge in their discipline.




PRINCIPAL
K.T. Patil College of Pharmacy
Osmanabad-413501

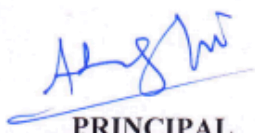
MOBILE RESTRICTION FOR STUDENT AND TEACHER

The college has implemented a comprehensive mobile ban policy to ensure a conducive learning environment and promote academic focus among students. Below are the key details of the policy:

- ❖ It is applicable to Students, faculty, and staff members within the college premises during academic sessions, including classrooms, libraries, and study areas.
- ❖ The use of mobile devices for non-academic purposes is strictly prohibited during class hours, including but not limited to texting, calling, browsing social media, gaming, and watching videos.
- ❖ In certain exceptions: the authorities (Principal/ Academic coordinator/class teacher) may permit mobiles for educational purposes, such as accessing course materials, participating in interactive learning activities, or conducting research, with prior approval.
- ❖ Faculty members are responsible for enforcing the mobile ban policy in their respective classrooms. They may confiscate mobile devices found in violation of the policy and return them after the class session.
- ❖ Students who repeatedly violate the mobile ban policy may face disciplinary action, including warnings, fines, or temporary suspension of mobile device privileges within the college premises.
- ❖ The college communicates the mobile ban policy to all students, faculty, and staff members through various channels, including student handbooks, official announcements, and signage in prominent locations.
- ❖ The college provides alternative resources and support to students who may require assistance in adhering to the policy, such as access to designated phone zones outside class hours or counseling services for technology addiction.

By implementing and enforcing the mobile ban policy, the college aims to foster a culture of academic integrity, minimize distractions, and maximize student engagement and learning outcomes.




PRINCIPAL
PRINCIPAL
K.T. Patil College of Pharmacy
Osmanabad-413501